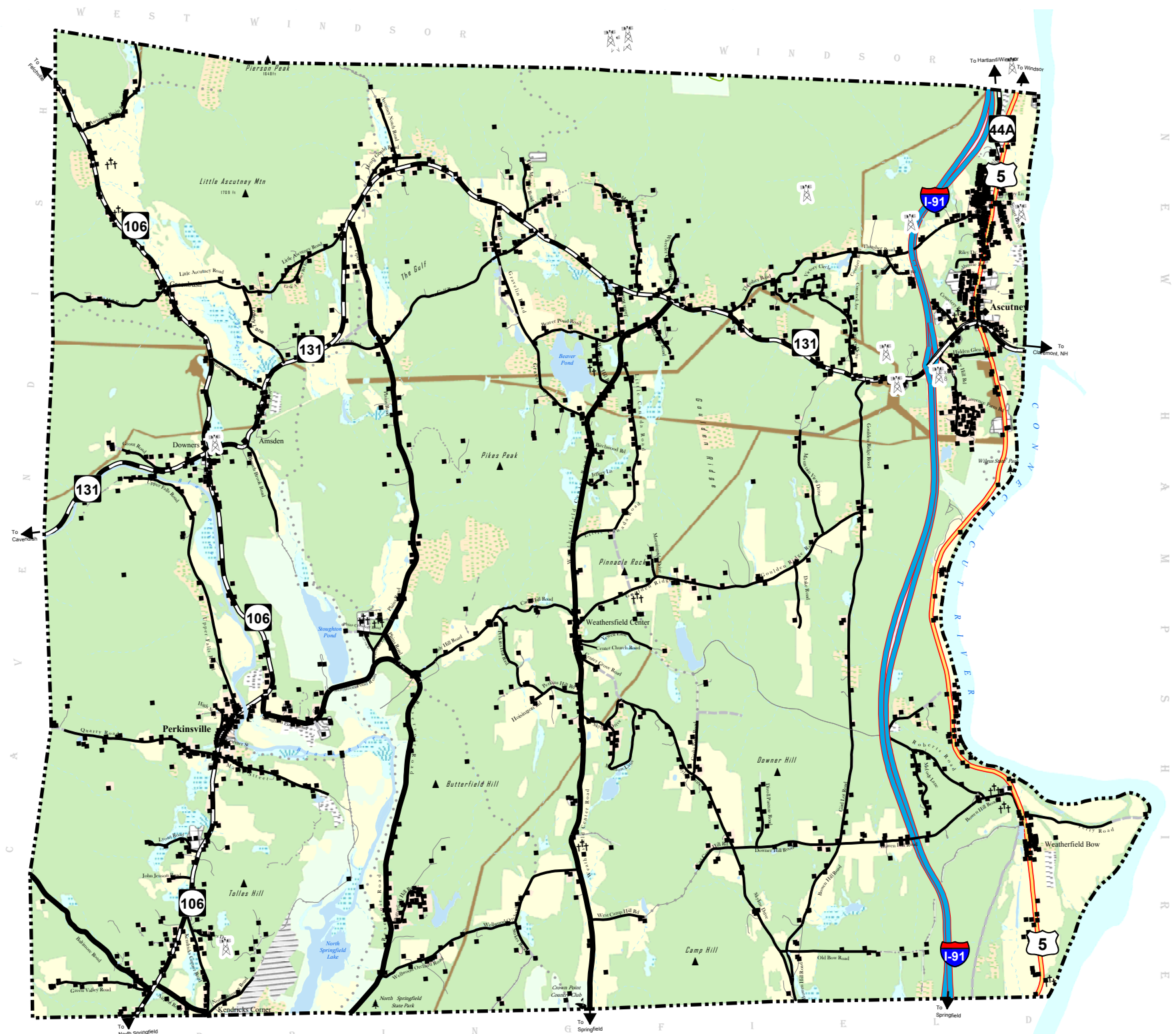


TOWN OF WEATHERSFIELD

Current Land Use/Land Cover

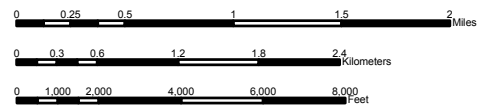


Legend

- Town Boundary
 - Wireless Communication Facility (including Towers and all other Facilities)
 - Cemetery
 - Elevation Markers and Points
 - Village and Hamlets
 - Buildings
- Roads:**
- Class I TH
 - Class II TH
 - Class III TH
 - Class IV TH
 - State Forest Road
 - Private Road
 - Vermont State Highway
 - US Highway
 - Interstate
 - Legal Trail
 - Driveway (Private)

Current Land Use:

- Agricultural Land
- Air Transportation
- Commercial
- Communication
- Cemetery/Cultural
- Forest
- Government/Institutional
- Inactive Dump Sites
- Mixed Herbaceous and Shrub/Brush
- Outdoor Recreation
- Mixed
- Residential
- Right of Way
- Strip Min/Quarry or Gravel Pit
- Utilities (elec., sewer etc.)
- Water
- Wetland



Sources of Data:
 Vermont Center for Geographic Information (VCGI);
 Southern Windsor County Regional Planning Commission (SWCRPC);
 Natural Resource Conservation Service (NRCS);
 Micro Data, Incorporated (MicroData)

TOWN BOUNDARY: Converted from VCGI coverage "TBHASH" (SWCRPC)
 CEMETERY: Converted from USGS Quad Maps (VCGI)
 BUILDING: Locations derived using 1:5000 orthophotos 1994 (Not E911 structures)
 ROADS: VCGI Road Centerlines from 1:5000 orthophotos and GPS correction
 CURRENT LAND USE: Drafted on 1994 1:5000 orthophotos (MicroData)
 SURFACE WATERS: From 1:5000 orthophotos and field verification (NRCS)

All Data and Relationships depicted in this map are intended for planning purposes only
 SWCRPC, NRCS, MicroData and VCGI make no representation of any kind, including but not limited to the warranties of
 merchantability or fitness for a particular use, nor are any such warranties implied with respect to this data

Map Created June 05, 2003
 Map updated on December 3, 2003
 Map Location: ArcGIS 8 - c:\geoinfo\current_projects\vnisc_maps\weathersfield_ciu.mxd

Map Printed by:
 Southern Windsor County Regional Planning Commission
 P.O. Box 320
 Ascutney Professional Bldg, Rte 5
 Ascutney, VT 05030-0320
 802-874-9201

