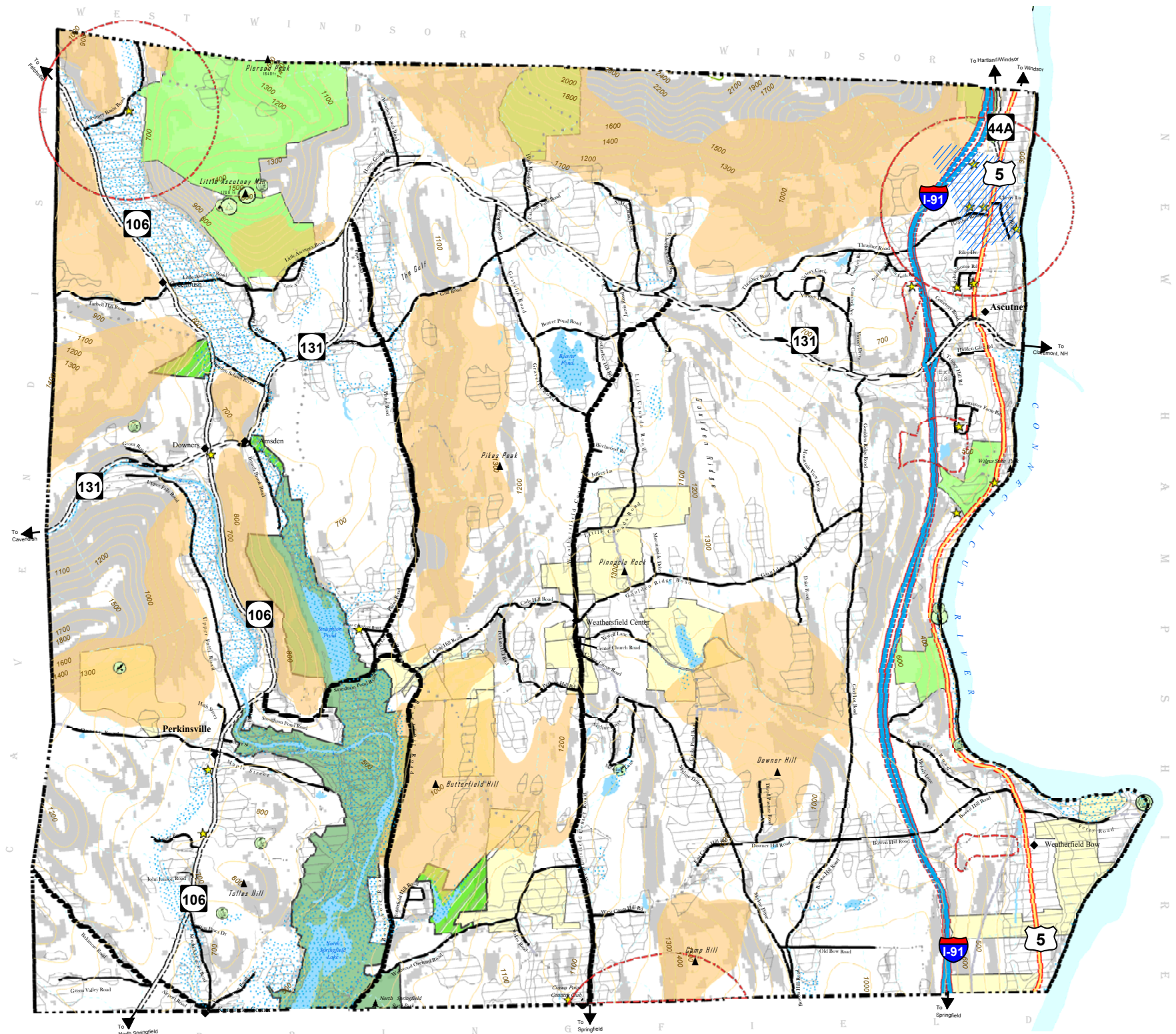


# TOWN OF WEATHERSFIELD

## Natural Resources



### Legend

- ▲ Elevation Markers and Points
- ◆ Village and Hamlets
- Town Boundary
- Surface Water
- Deer Wintering Area
- Areas Above 25% Slope
- Wellhead Protection Area
- 100 Ft Contour
- Floodplain (100 Yr)
- Prime Agricultural Lands
- ★ Actual well or surface water intake structure (Public Drinking Water Source)
- 3,000 foot Buffer around Public Water Wells

### Roads:

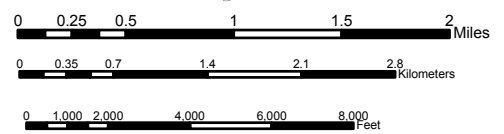
- Class I TH
- Class II TH
- Class III TH
- Class IV TH
- State Forest Road
- Private Road
- Vermont State Highway
- US Highway
- Interstate
- Legal Trail
- Driveway (Private)

### Conservation Lands:

- Municipally Owned (Public Land)
- Federally Owned (Public Land)
- State Owned (Public Land)
- Privately Conserved

### Rare Plant/Animal:

- Bird
- Plant
- Other Animal



DATA SOURCES: Vermont Center for Geographic Information (VCGI), Southern Windsor County Regional Planning Commission (SWCRPC), Vermont Agency of Natural Resources (VTANR), and Vermont Land Trust  
 CONSERVATION LAND: Upper Valley Land Trust and Vermont Land Trust; All public and private lands with easements. 1:5,000 Last update; January, 2003.  
 ROADS: VCGI; VT Enhanced 911 Board. 1:5,000 orthophotos, GPS, & other. Last update; November, 2003.  
 PUBLIC DRINKING WATER SOURCES: VTANR; Water Supply Division. 1:24,000-1:25,000 USGS topographic maps. 1999.  
 SUMMITS: VCGI; Geographic Names USGS Data. Geographic Names Information System. Last update; February, 2003.  
 WELL HEAD PROTECTION AREAS: VTANR, Water Supply Division. 1:24,000-1:25,000 USGS topographic maps. 1999.  
 VILLAGES: United States Geologic Service. USGS Quads 7.5 Minute, 1:24,000 topographic maps.

TOWN BOUNDARY: Converted from VCGI coverage "TBHASH" (SWCRPC), August 2002.  
 ROADS: VCGI Road Centerlines from 1:5000 orthophotos and GPS correction. August 2003  
 SURFACE WATERS: From 1:5000 orthophotos and field verification (NRS), January 2003.

All Data and Relationships depicted in this map are intended for planning purposes only. SWCRPC, NRS, MicroData and VCGI make no representation of any kind, including but not limited to the warranties of merchantability or fitness for a particular use, nor are any such warranties implied with respect to this data.

Map Created June 05, 2003  
 Map updated on February 9, 2004  
 Map Location: ArcGIS 8 - c:\geoinfosys\current\_projects\smisc\_maps\weathersfield\_nrs3.mxd  
 Map Printed by:  
 Southern Windsor County Regional Planning Commission  
 P.O. Box 320  
 Acutey Professional Bldg. Rte 5  
 Acutey, VT 05030-0320  
 802-674-9201

